



CROP

PRODUCTION SHOW
Growing with you.

January 14 - 17, 2019

Prairieland Park
Saskatoon, Saskatchewan

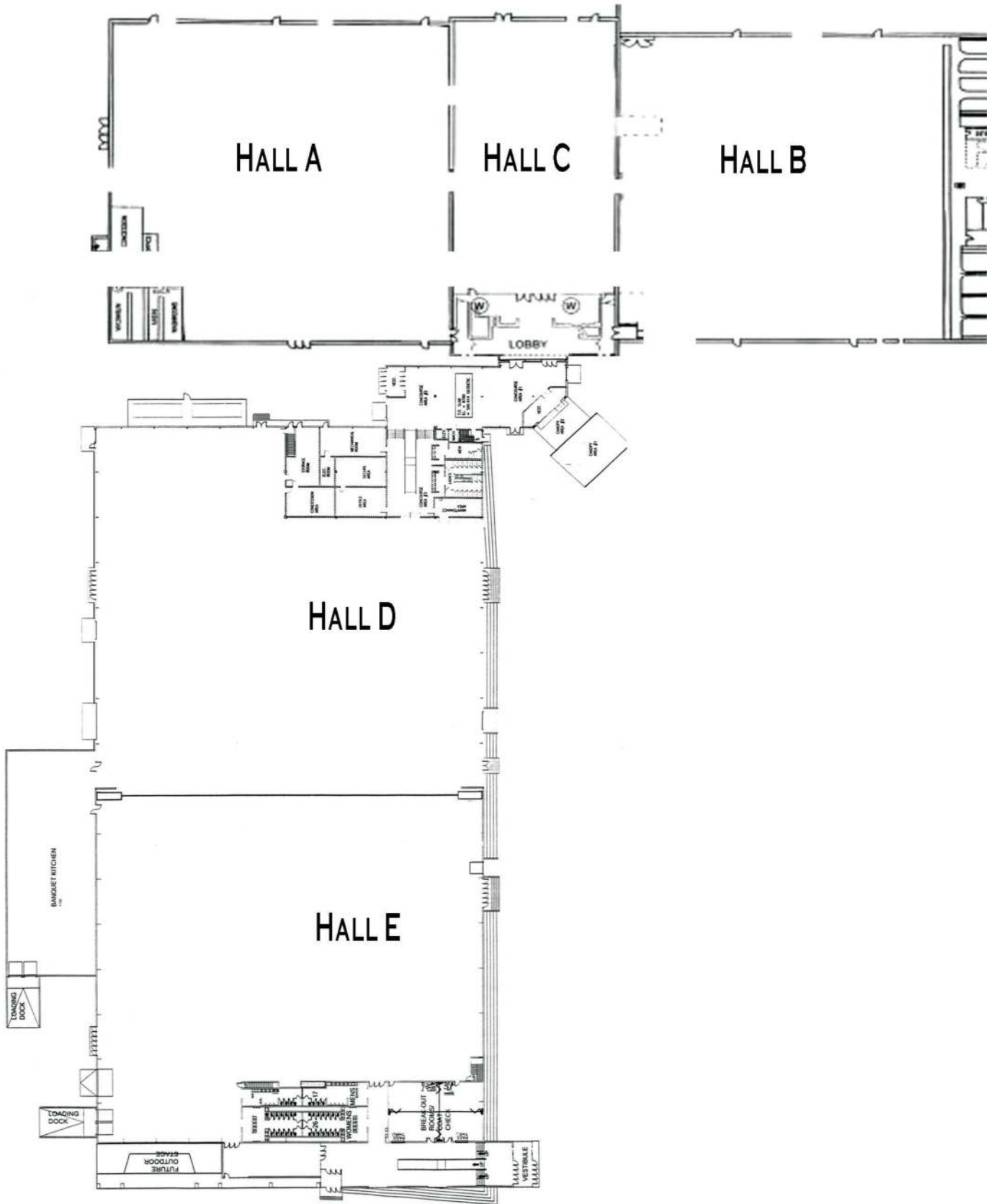
PRESENTED BY



2019 TRADE SHOW INFORMATION

*Prairieland
Park*

cropproductiononline.com



Thank you to Prairieland Park's Corporate Sponsors



NOTE: This show is open to manufacturers and distributors who fit the criteria of the show.

SHOW DATES & TIMES:

Monday, January 14, 2019	12:00 Noon to 6:00 p.m.
Tuesday, January 15, 2019	9:00 a.m. to 5:00 p.m.
Wednesday, January 16, 2019	9:00 a.m. to 5:00 p.m.
Thursday, January 17, 2019	9:00 a.m. to 5:00 p.m.

MOVE IN TIMES:

Large Equipment by appointment:

Thursday, January 10 - 8:00 a.m. - 5:00 p.m.
Friday, January 11 - 8:00 a.m. to 5:00 p.m.
Saturday, January 12 - 8:00 a.m. to 5:00 p.m.

Forklift Assistance: Forklifts and operators will be available during set-up and tear down times. Operators may be contacted from the Show Office. Prairieland Park assumes no responsibility for damage to display or equipment, which may result, directly or indirectly, from the use of the Prairieland Park forklift and operator or other equipment. There is no fee for standard load and unload forklift service. However if show management considers operators and equipment are required for an extended period of time a fee will be charged.

Our corporate policy at Saskatoon Prairieland Park Corporation prohibits us from unloading any equipment using multiple forklifts or unloading material over 8,000 lbs. Special arrangements will have to be made for equipment exceeding this weight.

General Move In:

Sunday, January 13 - 8:00 a.m. to 5:00 p.m. **Exhibitors are encouraged to move in on Sunday.**
Monday, January 14 - 8:00 a.m. to Noon – Carry In Exhibits Only

Must be ready for NOON opening.

MOVE OUT TIMES:

Thursday, January 17 – 5:00 p.m. to Midnight
Friday, January 18 – 8:00 a.m. – Noon

SERVICES PROVIDED:

1. Security - 5:00 pm, Friday, January 11 to Friday, January 18 at Noon.
2. Forklift - available during set-up and tear-down, as per the policy outlined above. (*charges may apply)
3. Electrical - one 110v 15 amp outlet near each space
4. Drapery - backs - eight feet high, sides - four feet high.
5. Carpet - please note that Hall A & Hall B now have a permanent dense pile carpet installed. Additional carpet may be laid on top of this carpet if desired.
6. Exhibit aids - you can rent tables, chairs, carpet spotlights, etc. from the official show supplier, Handy Special Events. Order information will be included in your confirmation package.
7. Door dimensions:
 - Hall A - 18' (wide) X 14' (high)
 - Hall B - 18' (wide) X 14' (high) south side, 10' x 10' north side
 - Hall C - 24' (wide) X 20' (high)
 - Hall D - 24' (wide) X 20' (high)
 - Hall E - 20' (wide) X 20' (high)
8. Exhibitor badges may be obtained at the Events Office in Hall D.
9. Rental space fees will be refunded, with the exception of \$200.00 administrative fee, where cancellations are received by November 1, 2018. No refunds will be paid on later cancellations or no shows. Prairieland reserves the right to reject or cancel any or all orders or confirmations and refund rental fees paid.

LIABILITY INSURANCE:

Refer to Rule #12 for required Public Liability Insurance.

WESTERN CANADIAN
CROP PRODUCTION SHOW
2019



CROP
PRODUCTION SHOW
Growing with you.

Presented by



HOST HOTEL



PARK TOWN HOTEL
S A S K A T O O N

PRODUCED BY:

Saskatoon Prairieland Park Corporation
P.O. Box 6010
Saskatoon, SK S7K 4E4
Tel: (306) 931-7149 Fax: (306) 931-7886
Toll Free: 1-888-931-9333

APPLICATION DEADLINE:

FRIDAY, SEPTEMBER 14, 2018

Park Town Hotel
924 Spadina Crescent E. Saskatoon, SK S7K 3H5
Toll Free: 1 (800) 667-3999
Phone: (306) 244-5564
Fax: (306) 665-8698
www.parktownhotel.com